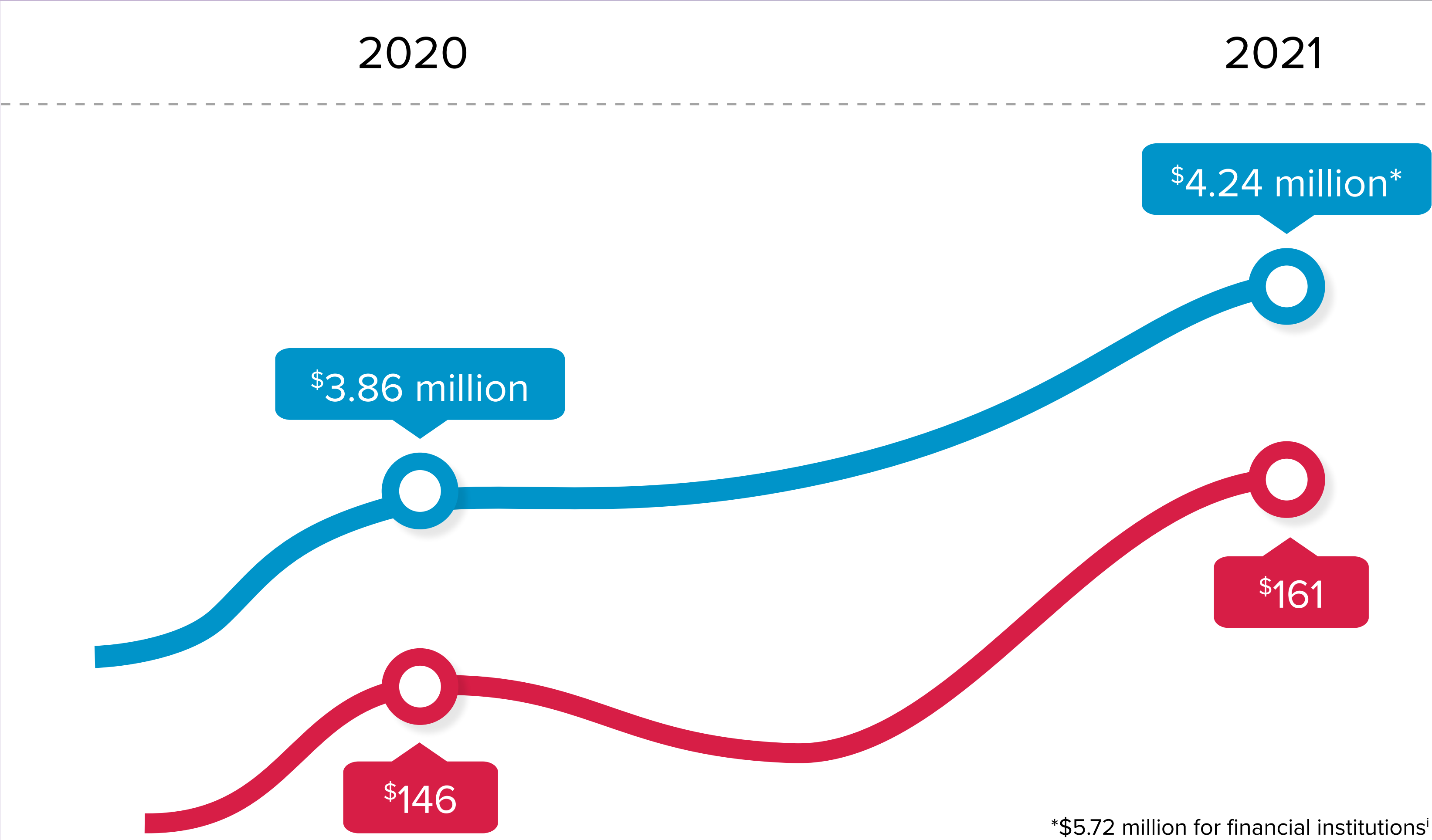
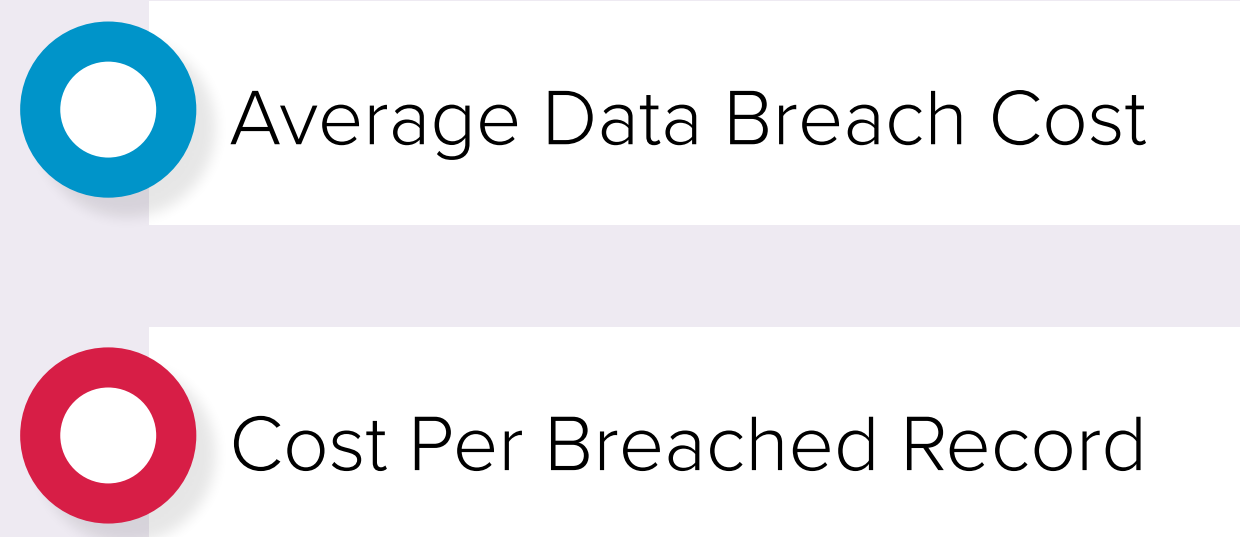


# Security Is Driving Network Enhancements

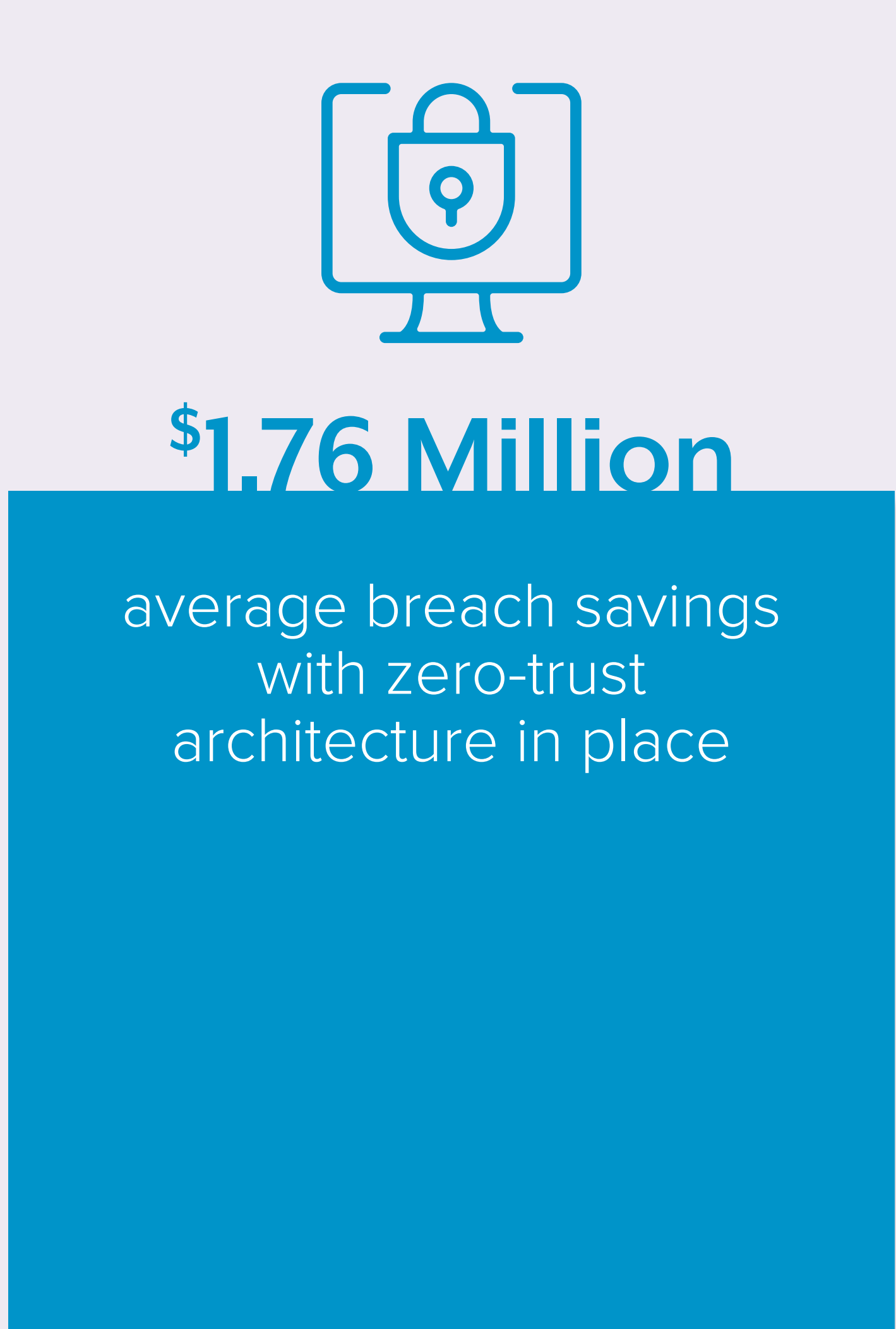
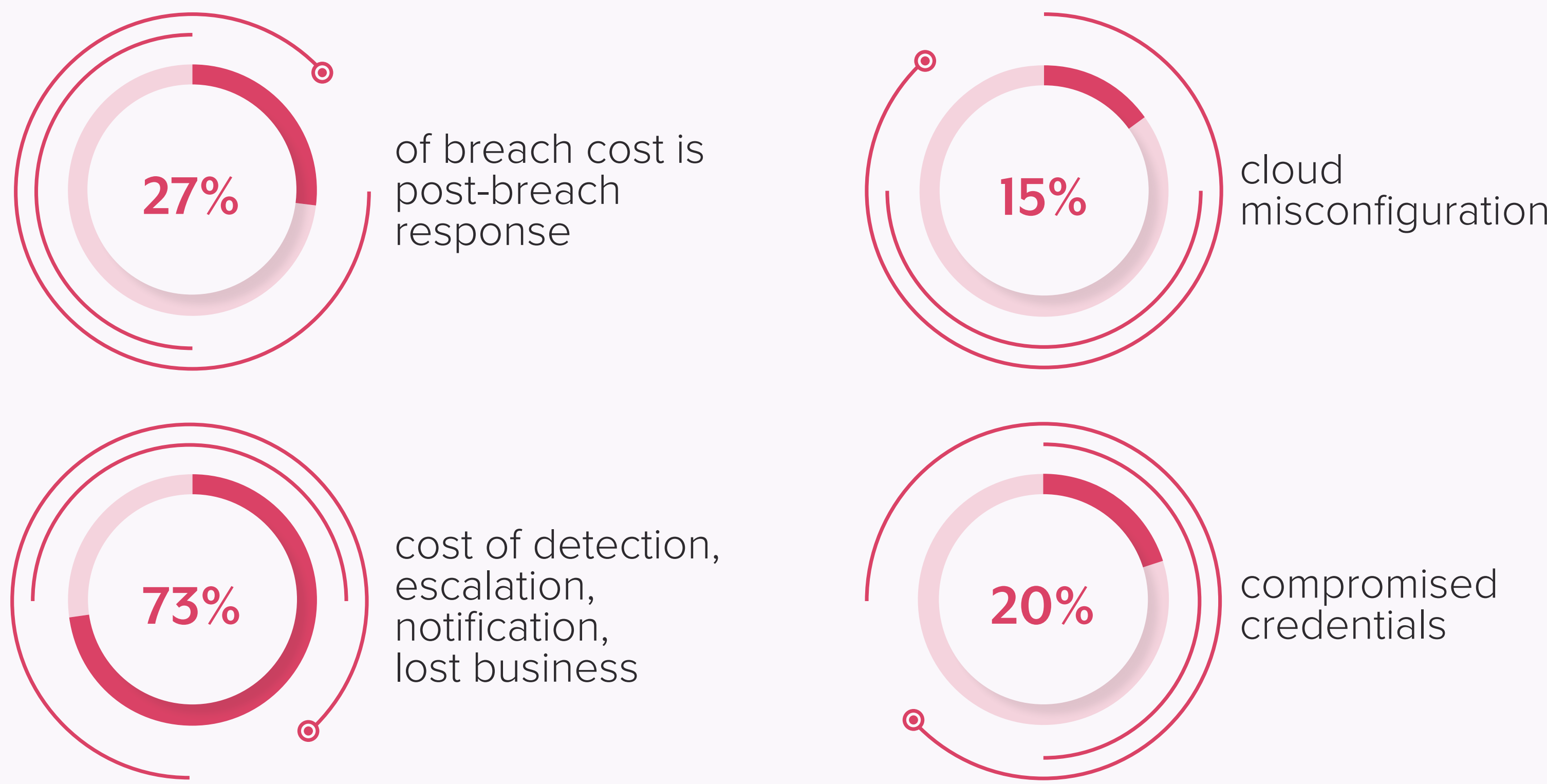
New security strategies are driving network enhancements and upgrades to legacy architectures.

## Why Now?<sup>i</sup>

Risks and vulnerabilities are only getting worse, which is driving the convergence of network and security – and why network planners must take a proactive look at their network strategy.



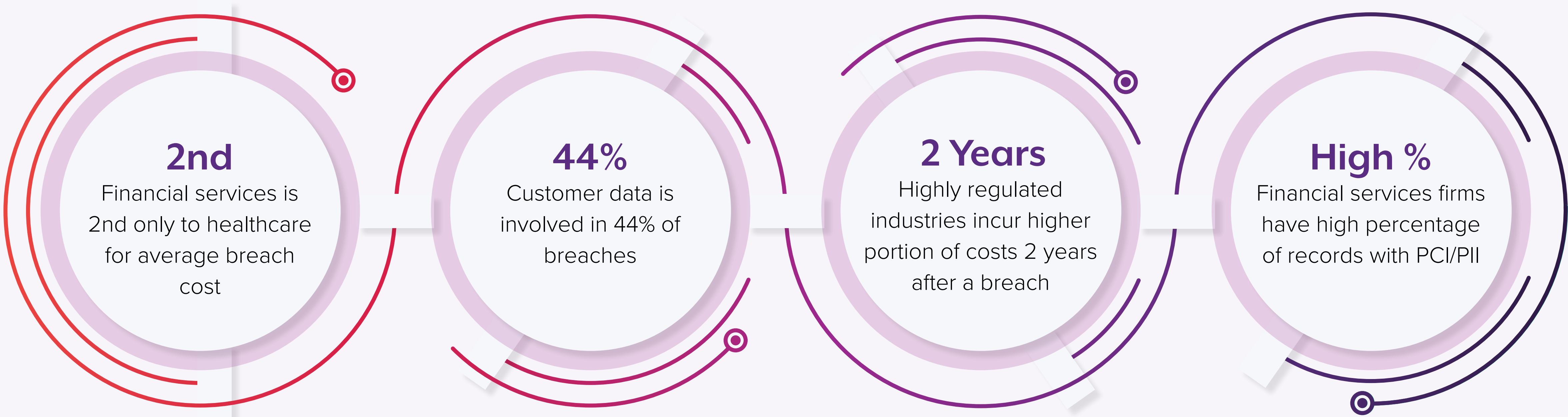
## Why Is Security Changing?<sup>i</sup>



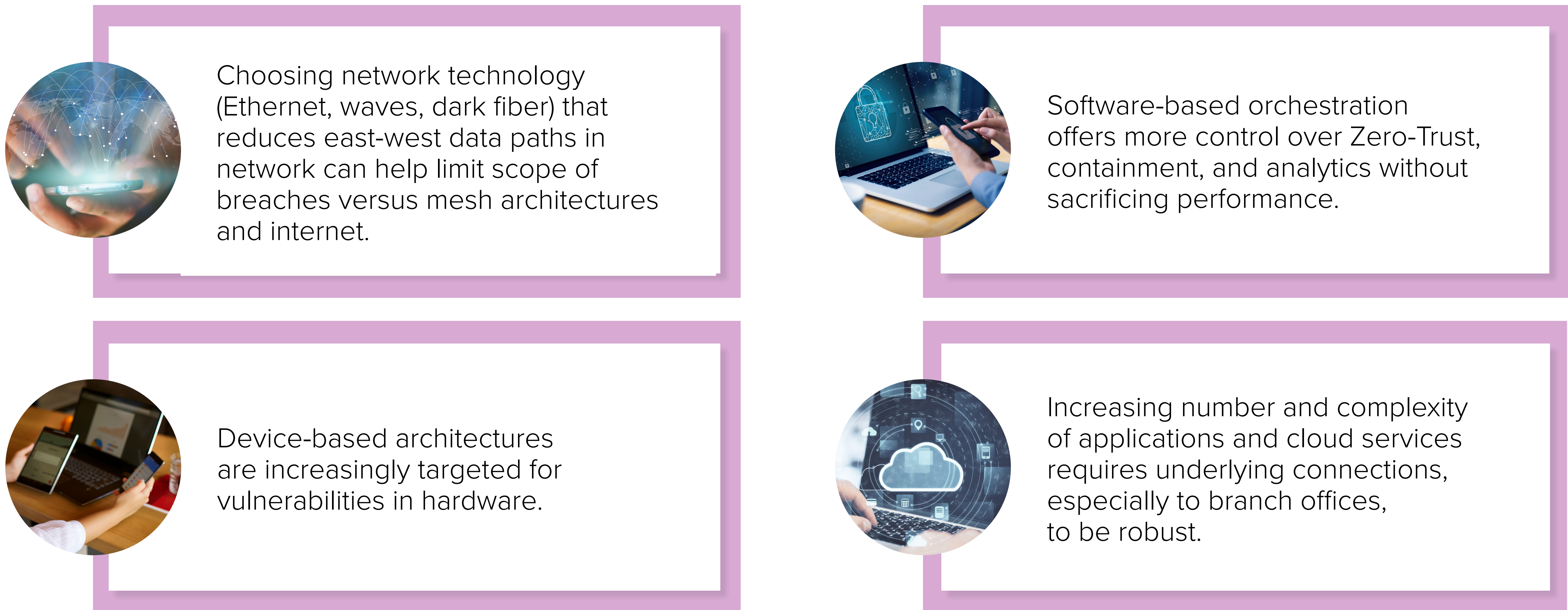
## Secure Service Edge (SSE) Is The New Normal



## Disproportionate Impact On Financial Services<sup>i</sup>



## How Does Network Technology Affect Security Posture And SSE?



<sup>i</sup> 2021 Cost of a Data Breach Report, Ponemon Institute and IBM Security